



EMERGENCY TREATMENT & DENTAL PRACTICE UPDATE

APRIL 3, 2020



Speakers

Dr. Jeff Kahl

Pediatric Dentist, CSDS

President, CDA

Dr. Kevin Patterson

Oral Surgeon, MDDS

President-Elect, MDDS

Dental Emergency Response Team

- CDA Officers and Staff
- MDDS Officers and Staff
- CSDS Officers and Staff
- Colorado Department of Public Health and Environment
- Department of Regulatory Agencies (DORA)
- Delta Dental of Colorado
- Colorado Dental Hygienists' Association
- The Dentists Professional Liability Trust of Colorado
- University of Colorado School of Dental Medicine

April 1, 2020 ADA Notice

ADA Urges Dentists to Heed April 30 Interim Postponement Recommendation, Maintain Focus on Urgent and Emergency Dental Care Only

April 01, 2020

Contact Information:

medialrelations@ada.org

The current American Dental Association (ADA) recommendation for dentists to keep their offices closed to all but emergency care expires on April 6. The new interim recommendation from the ADA is that dentists keep their offices closed to all but [urgent and emergency procedures](#) until April 30 at the earliest.

The rate of COVID-19 transmissions is on the rise in most states. The new interim ADA recommendation is in keeping with the recent [U.S. Centers for Disease Control and Prevention's recommendation](#) to perform only emergency or urgent dental care until April 30, 2020 and must be taken seriously by all dental professionals. The ADA believes individual dentists should exercise professional judgment and carefully consider the risks outlined in the [ADA's interim guidance](#) and weigh those risks against any possible benefit to the patient, the practice employees, the community at large, and the practitioner. Critically important is the availability of appropriate personal protective equipment (PPE) to minimize any risk of transmission during [emergency and urgent care](#). Due to the proximity of individuals during dental procedures, and the generation of aerosols, dentists, staff and patients are at high risk of transmission.

The ADA also recognizes that existing and future [local or state government mandates](#) supersede ADA recommendations. In addition, state dental associations may best understand local challenges being faced and make recommendations appropriate to members in their areas.

The PPE required to reduce the risk of transmission during dental treatment to its lowest levels (as noted in [algorithm 3](#)), are scarce. Asymptomatic patients cannot be assumed to be COVID-19 free. As of March 31, point of care tests exist, but are extremely difficult to obtain. Unless point of care tests are readily available to the dental practice, no one can be assured that they are treating a non-infected individual. The safety of their patients, staff and themselves should be foremost when dentists exercise their professional judgment, and information regarding the relative risks is available from the ADA, via the Interim Guidance, to assist in making those decisions.

Resources

ADA Website:

www.ada.org/virus

CDA Website:

www.cdaonline.org/covid19

MDDS Website:

www.mddsdentist.com/covid19

April 1, 2020 ADA Notice

ADA Urges Dentists to Heed April 30 Interim Postponement Recommendation, Maintain Focus on Urgent and Emergency Dental Care Only

April 01, 2020

Contact Information:

medialrelations@ada.org

The current American Dental Association (ADA) recommendation for dentists to keep their offices closed to all but emergency care expires on April 6. The new interim recommendation from the ADA is that dentists keep their offices closed to all but [urgent and emergency procedures](#) until April 30 at the earliest.

The rate of COVID-19 transmissions is on the rise in most states. The new interim ADA recommendation is in keeping with the recent [U.S. Centers for Disease Control and Prevention's recommendation](#) to perform only emergency or urgent dental care until April 30, 2020 and must be taken seriously by all dental professionals. The ADA believes individual dentists should exercise professional judgment and carefully consider the risks outlined in the [ADA's interim guidance](#) and weigh those risks against any possible benefit to the patient, the practice employees, the community at large, and the practitioner. Critically important is the availability of appropriate personal protective equipment (PPE) to minimize any risk of transmission during [emergency and urgent care](#). Due to the proximity of individuals during dental procedures, and the generation of aerosols, dentists, staff and patients are at high risk of transmission.

The ADA also recognizes that existing and future [local or state government mandates](#) supersede ADA recommendations. In addition, state dental associations may best understand local challenges being faced and make recommendations appropriate to members in their areas.

The PPE required to reduce the risk of transmission during dental treatment to its lowest levels (as noted in [algorithm 3](#)), are scarce. Asymptomatic patients cannot be assumed to be COVID-19 free. As of March 31, point of care tests exist, but are extremely difficult to obtain. Unless point of care tests are readily available to the dental practice, no one can be assured that they are treating a non-infected individual. The safety of their patients, staff and themselves should be foremost when dentists exercise their professional judgment, and information regarding the relative risks is available from the ADA, via the Interim Guidance, to assist in making those decisions.

ER Diversion & Dental Emergencies

Dental Emergency Definition

A potentially life-threatening condition requiring immediate treatment that includes:

- Uncontrolled bleeding
- Cellulitis or diffuse soft tissue swelling causing airway compromise
- Trauma

ER Diversion & Urgent Dental Care

Urgent Dental Care Definition

Conditions that need immediate attention to relieve pain and/or risk of infection. Treatment should be as minimally invasive as possible.

Urgent dental care addresses:

- Severe dental pain
- Acute pericoronitis
- Post-surgery osteitis
- Localized abscess causing pain
- Tooth fracture causing pain
- Tooth avulsion/luxation
- Dental treatment needed prior to critical medical procedure

Adequate PPE

What is adequate PPE for a procedure in asymptomatic patients

- with no known COVID exposure;
- who have recovered from a COVID infection; or
- have a recent negative test?

Adequate PPE

Non-Aerosol Producing Procedure:

This is determined to be a low-risk patient encounter.

PPE needed: Surgical mask, eye protection, gloves, gown along with appropriate post-procedure sterilization of the treatment room and equipment

Adequate PPE

Aerosol Producing Procedure:

This is determined to be a low-
/moderate-risk patient encounter.

PPE needed:

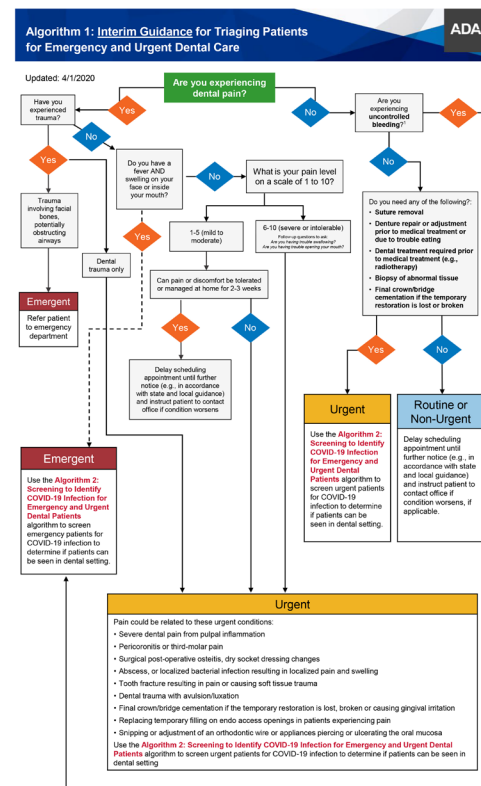
- Encounter is a moderate risk using surgical mask, full face shield, eye protection, gloves and gown
- Encounter is at low risk using N95 mask, full face shield, eye protection, gloves and gown

Best Practices

- **Avoid all procedures that could create an aerosol to treat an urgent condition unless you have the recommended PPE (N95 mask, full face shield, eye protection, gloves and gown)**
- At this time, it is safe to assume that every patient is COVID-19 + so use the appropriate PPE.

Best Practices

- Use telephone triage/pre-screen patients for signs of COVID-19 disease or risk of disease and to also determine the severity and urgency of their dental complaint.



ADA Triage Flowcharts available at www.ada.org/virus

Best Practices

- Limit the number of patients in your office at any one time. Keep the number of family members present at an appointment to zero or the absolute minimum (care giver, parent of a young child may be exceptions).
- Question and pre-screen patients by taking their temperatures before they enter your office.
- Have staff members and doctors do routine self-temperature tests twice daily.

In Other States

[About Us](#)[Newsroom](#)[Contact](#)

Executive order expands California's workforce to respond to COVID-19 surge

Dentists can register online now to join expanded workforce

March 31, 2020 | News and Announcements

Download  Mail  Share 



Under a new executive order, dentists are considered essential health care providers and are encouraged to sign up to join the [California Health Corps](#), a newly launched statewide effort to prepare the health care delivery system to respond to a potential surge in COVID-19 patients by opening additional health care sites. Registered dental hygienists and dental assistants can also register to join the effort. Recruits will be financially compensated and provided malpractice insurance coverage for the care they provide.

The Future



Resources

ADA Website:

www.ada.org/virus

success.ada.org/en/wellness

CDA Website:

www.cdaonline.org/covid19

www.cdaonline.org/wellness

MDDS Website:

www.mddsdentist.com/covid19